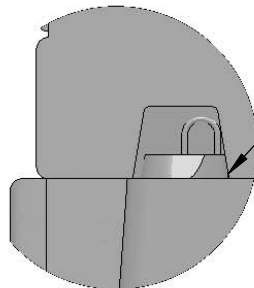
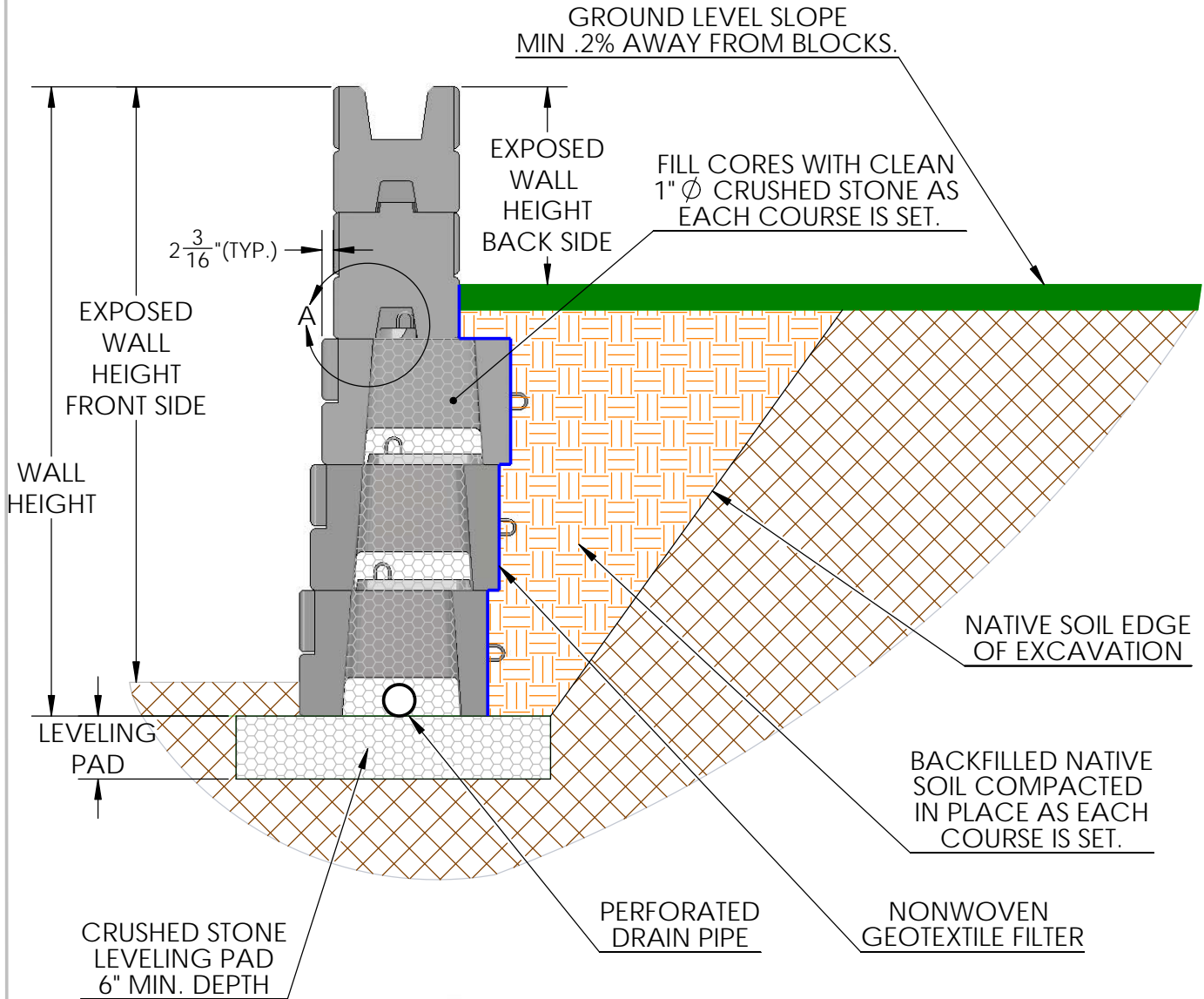


GRAVITY WALL WITH 36" & 2-SIDED VERTI-BLOCK



DETAIL A

LUG SHORTENED WITH 15" BLOCKOUT



DRAWN BY R FONTANESI	DATE 7/10/2015	TITLE: 10' WALL WITH 2-SIDED BLOCLS
16500 SOUTH 500 WEST BLUFFDALE, UTAH 84065 PHONE: (801) 571-2028		DWG NO. WD-27
SCALE: 1: 30		SHEET 1 OF 1