

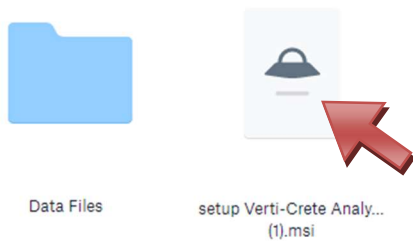
## Software Download Instructions

1. Download the setup file “setup Verti-Crete Analysis and Layout...”

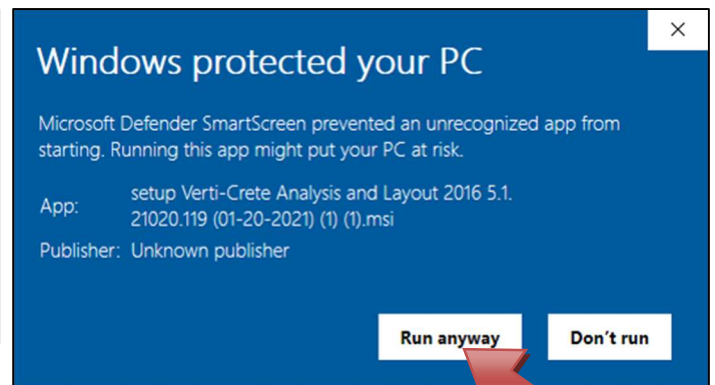
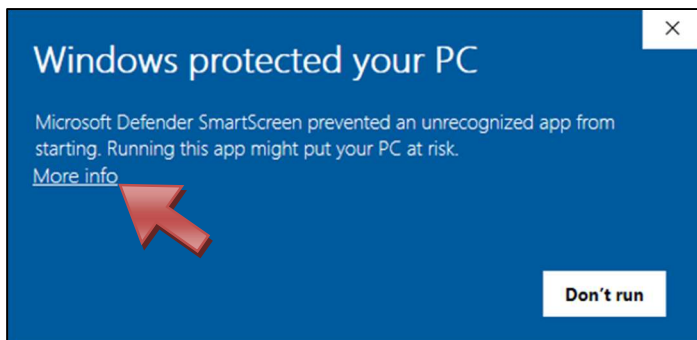


### VB Software Download

Sorted by name

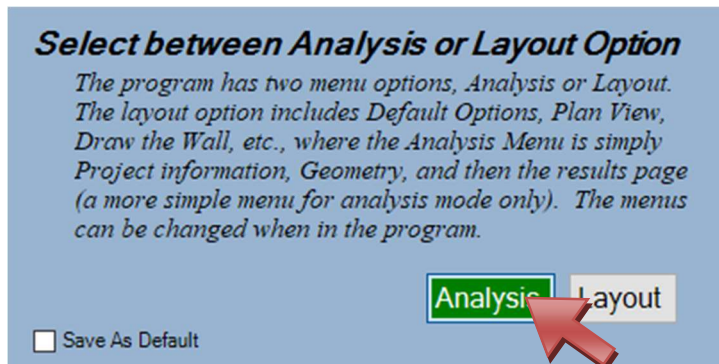


2. Double-click the **setup** icon in your files to run the software setup.
3. If a Windows warning box appears, click **More info** and **Run anyway**.

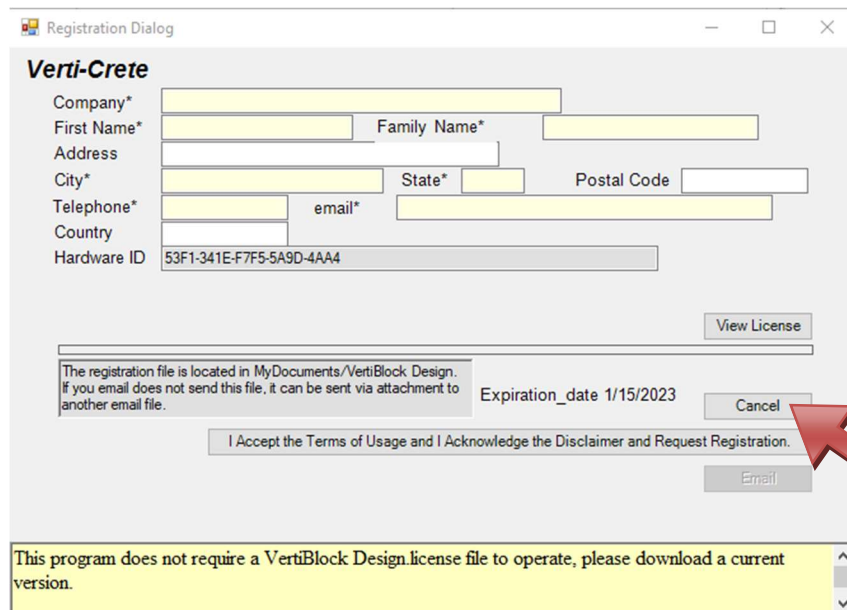


4. Follow the setup tutorial prompts and install the software.

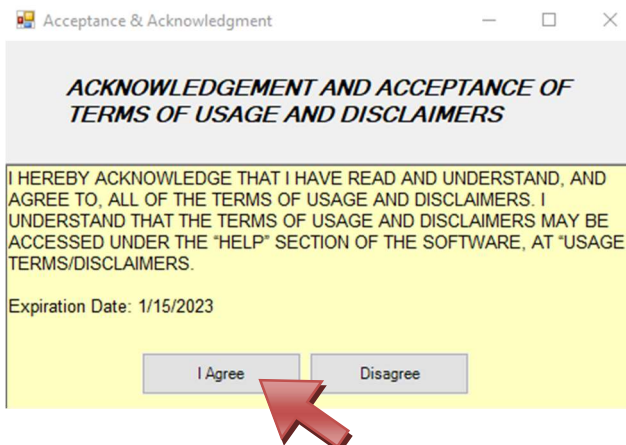
5. When you open the software, you can select **Analysis** or **Layout**. Analysis mode designs a wall section in profile view, while Layout mode designs an entire wall, running analyses at each section and giving a total block count and elevation view.



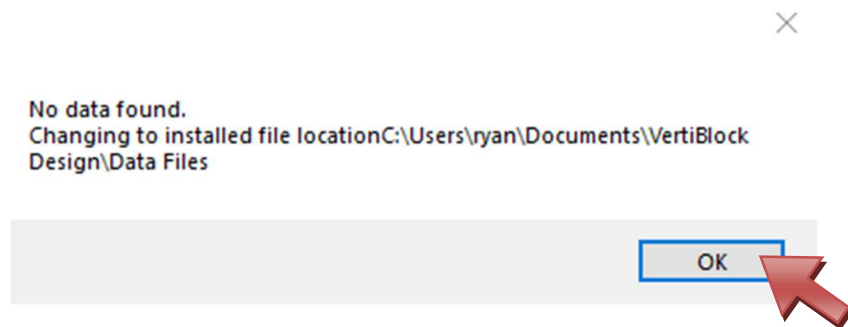
6. If a Registration window appears, just click **Cancel**. The software is already licensed through Verti-Crete and is free to users.



7. Agree to the Terms of Usage and Disclaimers to proceed in using the software.



8. The setup file should include data files for Verti-Block products. However, if the “No data found” window appears, press **OK** and do the following:



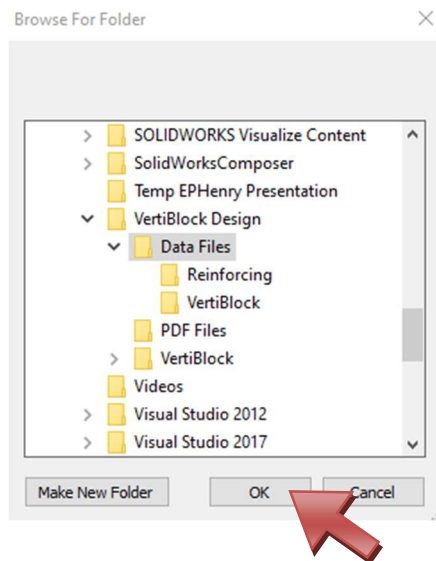
- a. Go to the Dropbox link where you downloaded the setup file and select “Data Files”.
- b. Save the “VertiBlock.bvd” and “VertiBlock (Extra).bvd” files to your computer under **This PC > Documents > VertiBlock Design > Data Files > VertiBlock**
- c. Save the “Stratagrid.bcd” file to the same **Data Files** location in the **Reinforcing** folder.
- d. In the software, go to **Preferences** at the bottom left.
- e. At the top of the Preferences page, click on the “...” icon at the right.

## Preferences

Default Data Location



- f. Select **This PC > Documents > VertiBlock Design > Data Files** and click **OK**



- g. Click **Save Preference Defaults** on the Preferences page, then close out of the software and open it again. You should now see block data available under the Block – Reinforcement Info tab.